

REGIONE AUTONOMIA FRIULI VENEZIA GIULIA  
PROVINCIA DI UDINE



COMUNE DI LAUCO  
PIANO REGOLATORE GENERALE  
COMUNALE

(VARIANTE GENERALE DI ADEGUAMENTO ALLA L.R. 52/91)

RELAZIONE GEOLOGICA

CARTA  
LITOLOGICA

TAV. 1.4 G  
Scala 1:5.000

del geol. GIANLUIGI L'AMERIZZI  
Studio di Geologia - via Montebello, 34 - UDINE  
15.01.1998



LEGENDA

Linea litologica

MS  
Limo e sabbia (torbiera)

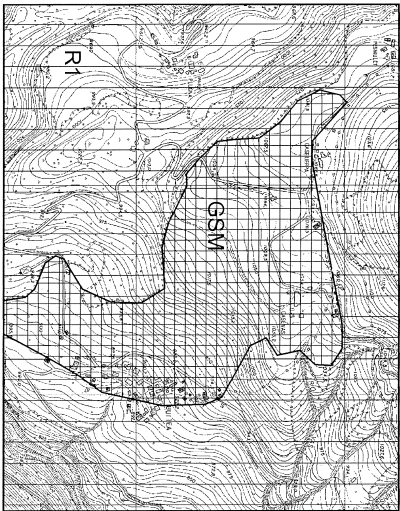
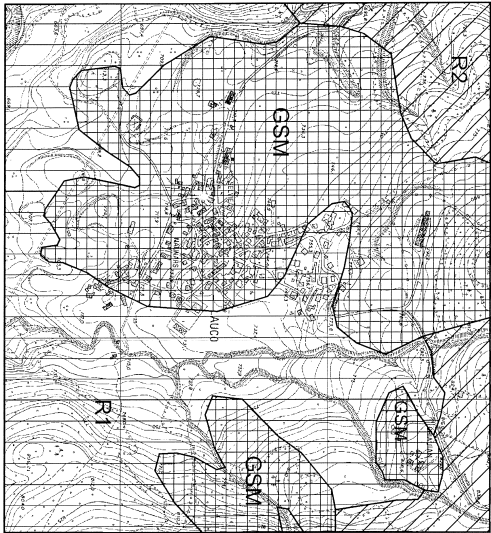
DI  
Detrito (ghiaie, ciottoli e massi)

GSM  
Ghiaie, sabbie e limo (limo > 25%)

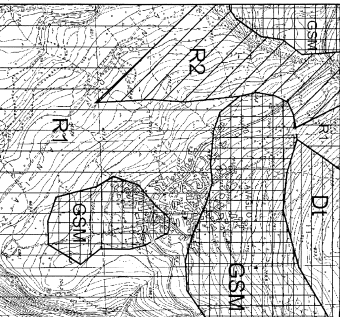
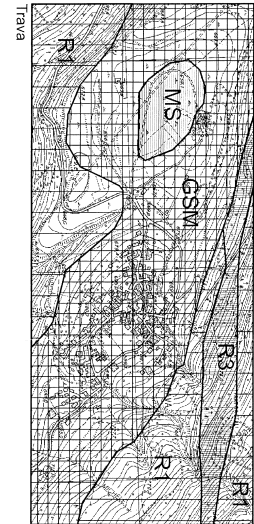
R3  
Tufi

R2  
Arenarie

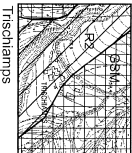
R1  
Calcari stratificati e massicci, calcari  
dolomiti e tofole



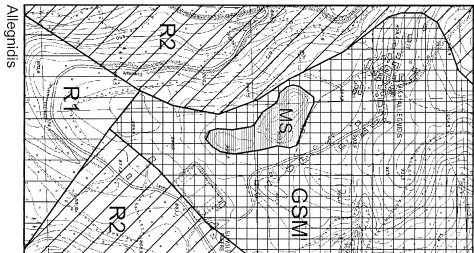
Plugna e Butera



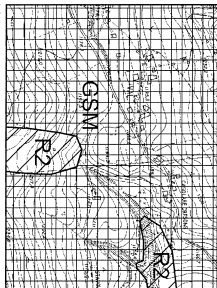
Avaglio



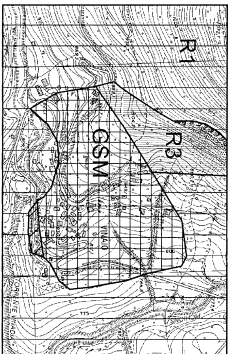
Trischamps



Allegnids



Val



Vinajo